

Welcome to Ashfield Trails newest and longest trail from The Trustees of Reservations Overlook to Stroheker Road/ Rt. 112. The trail is 15,497 feet long and includes the Northwest Cemetery, the Stone Bridge, and a rustic picnic table.

"The Northwest Cemetery is located in a lonely spot in a pasture once owned by Clifton Wing in the northwest part of town." At the time, there was a road running over the hill westerly past this spot. The earliest settlers, from Cape Cod, were buried here, beginning with Thomas Howes in 1793. The last known burial was Ruth (Bryant) Taylor, who died in 1867. In 1903 Clifton Wing sold this place to the Ashfield Burial Ground Association. In 1906 Zebulon Bryant Taylor, of Tacoma, Wash., who grew up in this area, hired long-time resident, George Howes, to list the people possibly buried here, for which many graves were unmarked by then. Taylor had the two monuments erected in memory of his family.

*(F. G. Howes, "History of Ashfield"; Booker and Garvin, "Ashfield Gravestones.")*

The uniquely curved Stone Bridge was built as part of County Road #51, petitioned in 1878 by Archibald Flower and others.

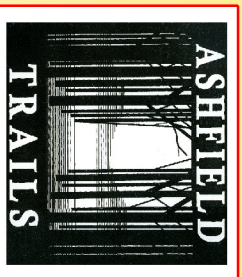
They asked the County Commissioners to replace County Road #38, from the saw mill of Jonathan Howes at the foot of Ashfield Mountain to the "reservoir" [Ashfield Lake], owned by Flower to power his grist mill. They claimed Road #38, built in 1846, was "steep, hard to ascend, and difficult to keep in repair," making it "a journey of much inconvenience for the traveler." The petition was granted in 1880, with the Town to complete the road before 1 Oct. 1881.

Stone bounds #0 to #37 marked the road layout. Bound #17 can be seen at the edge of the lawn near Stroheker Rd. Road #38 replaced an earlier county road built in

1798. The bridge abutments of the 1846 road can be seen in the brook near the picnic table. In 1897 a new county road, now Rt. 112, was commissioned and the 1880 road was discontinued. However, those going to or from Apple Valley used the Stone Bridge for many years after that. *(Research by Steven Gougeon and Nancy Garvin, Ashfield Historical Commission)*

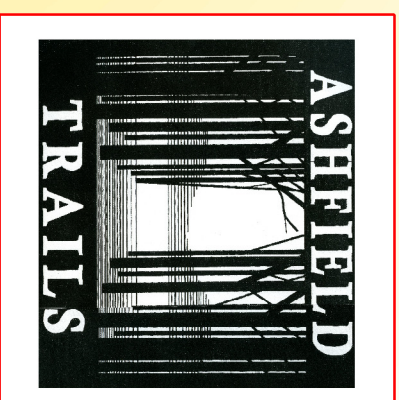
Most of this trail is on private property. Its use is a privilege granted by the land owner. Please treat the land with respect and stay on the marked trail. The following are NOT permitted: motorized vehicles, littering, camping, campfires, hunting, trapping, picking and removing any vegetation, such as wildflowers, or trees. Dogs must be on a leash at all times.

To volunteer or make a contribution to Ashfield Trails, please contact Phil Pless at [philippless@verizon.net](mailto:philippless@verizon.net) or at 413-628-3959.

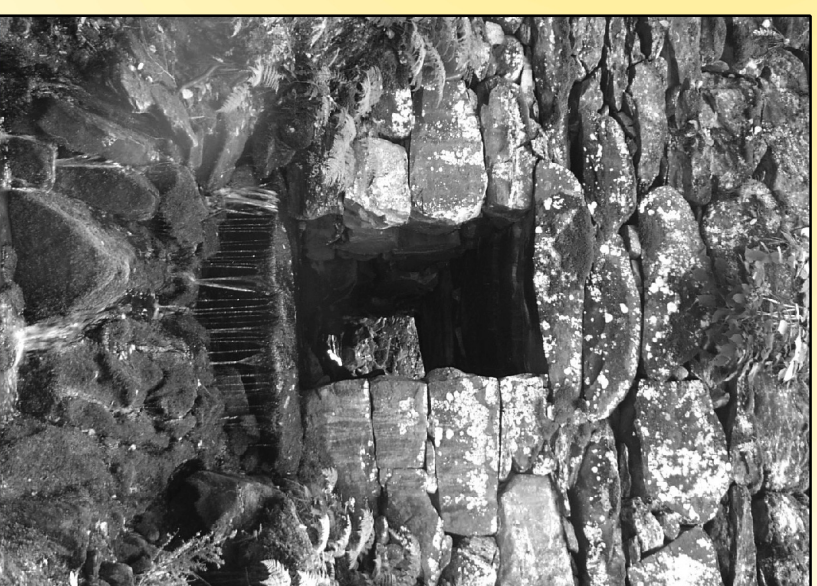


Copyright (c) 2009, Ashfield Trails

Ashfield Trails, P. O. Box 194  
Ashfield, MA 01330

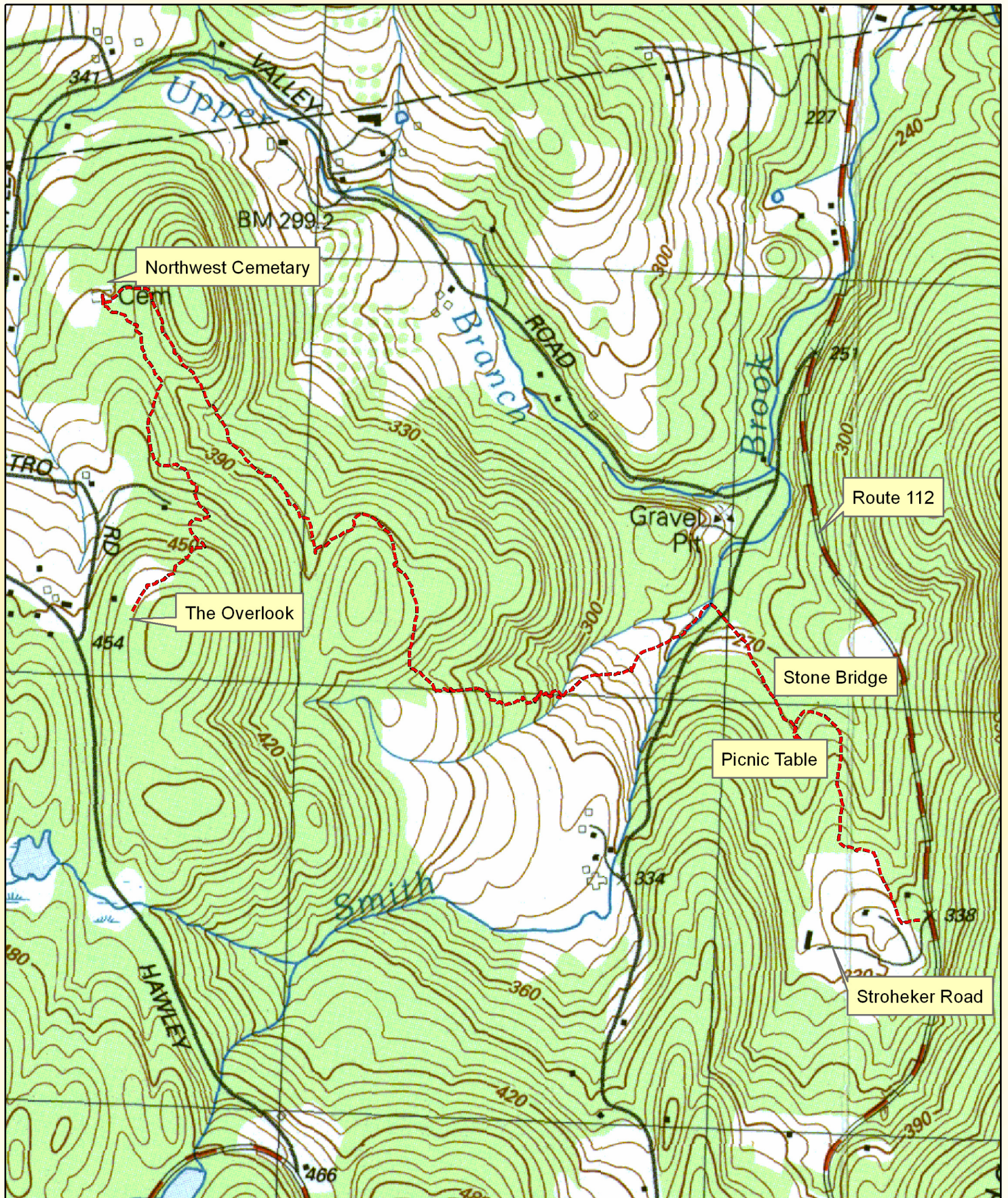


## TTOR Overlook - Stroheker Road Trail



Stone Bridge

# Trail Between The Trustees of Reservations Overlook and Stroheker Road/Route 112



Scale: 1" = 1,000'

Trail Length: 15,497 Feet