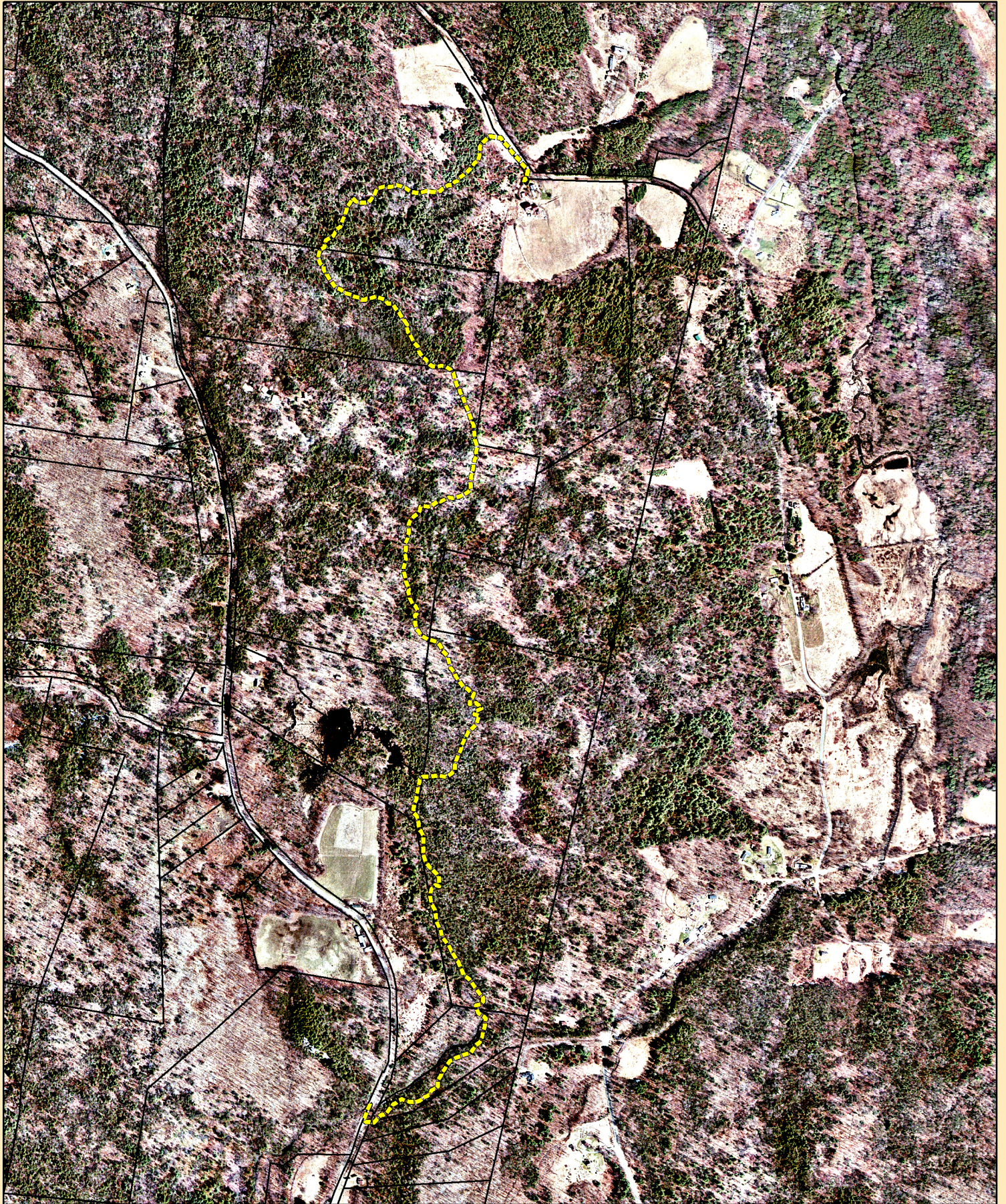


# The Trustees of Reservations Trail Between Bullitt and Chapel Brook Reservations



Scale: 1" = 1,000'

Trail Length: 12,015'

Prepared by  
Lester Garvin, 8/21/2012

Welcome to the Ashfield Trails Chapel Brook Reservation - Daughters of the American Revolution (D.A.R.) State Forest trail. The trail is the result of a collaboration by Ashfield Trails, The Trustees of Reservations and the Franklin Land Trust.

Construction was made possible by generous grants from the Massachusetts Department of Conservation and Recreation and the New England Mountain Bike Association.

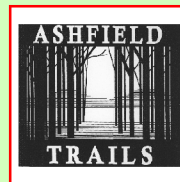


Bridge near West Road. It is located near a rustic cedar bench.

The trail is approximately three miles long and is of moderate difficulty. A round trip hike takes between 3 and 4 hours. Among the many historical, cultural and environmental features are old foundations, rock walls, ledges and meandering streams crossed by plank bridges.

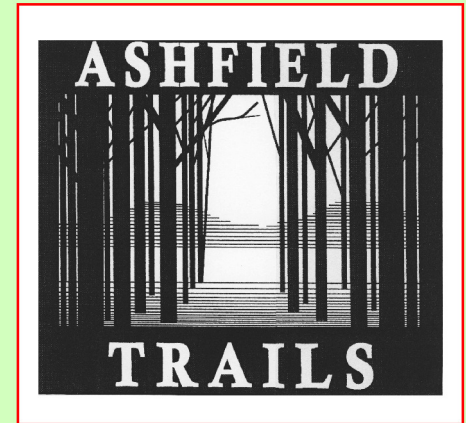
Portions of this trail are on private property, and its use is a privilege. Please treat the land with respect and stay on marked trails. The following are not permitted: motorized vehicles, littering, camping, campfires, hunting, trapping, picking or removing plants, wildflowers, trees or other vegetation.

If you would like to volunteer or make a contribution to Ashfield Trails, please contact Phil Pless at [philippless@verizon.net](mailto:philippless@verizon.net) or at 413-628-3959.



(c)2017

Ashfield Trails, P.O. Box 194  
Ashfield, MA 01330



## Chapel Brook Reservation - D.A.R. State Forest Trail

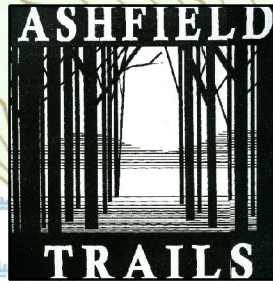


Cedar bench beside beaver pond.

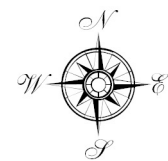
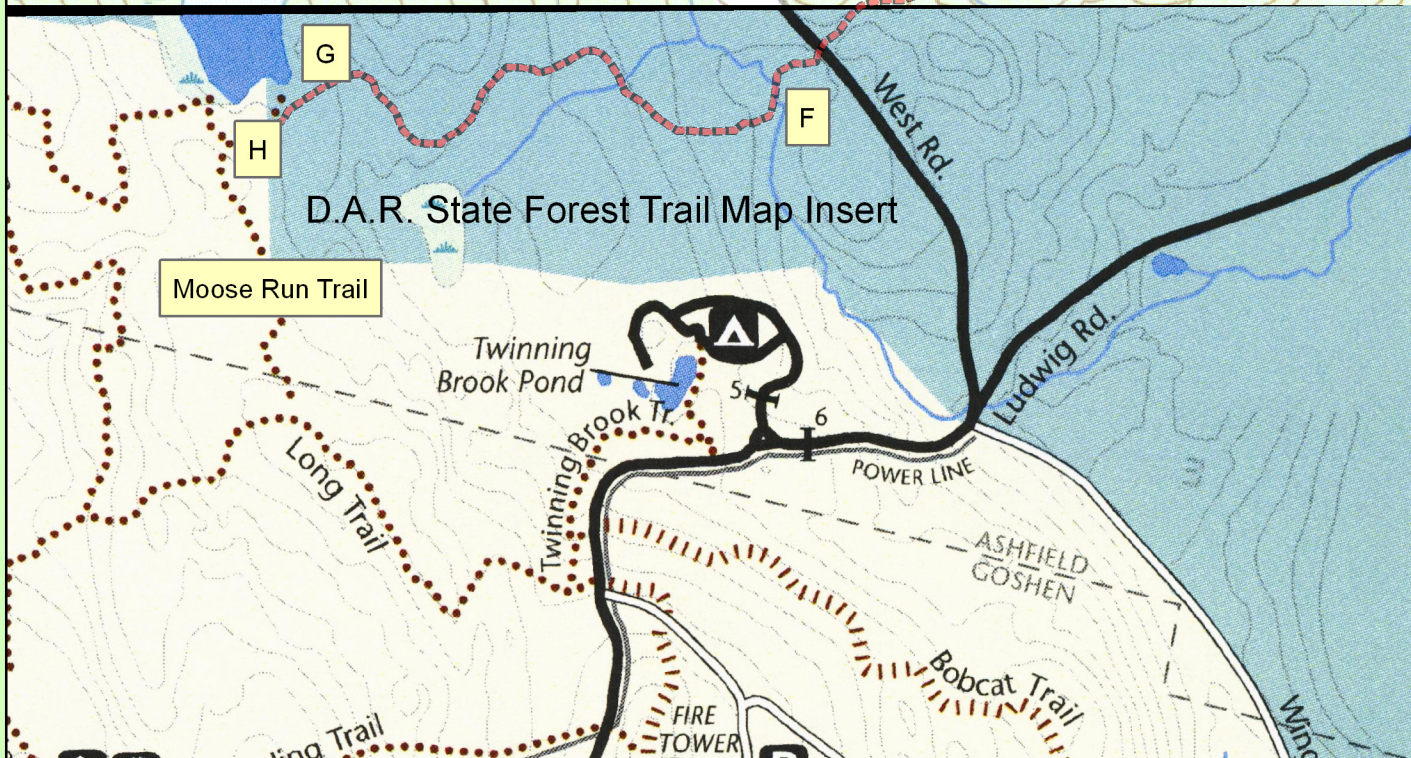
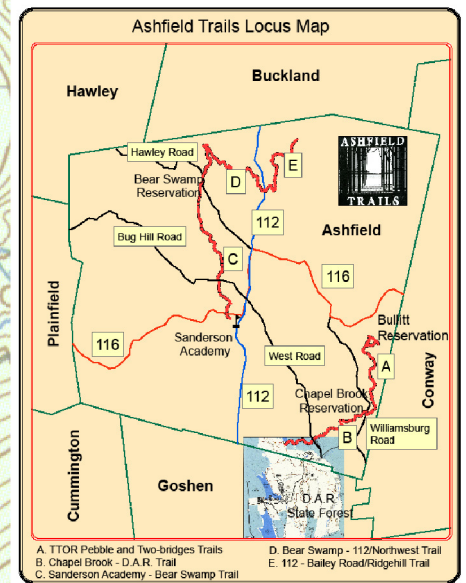
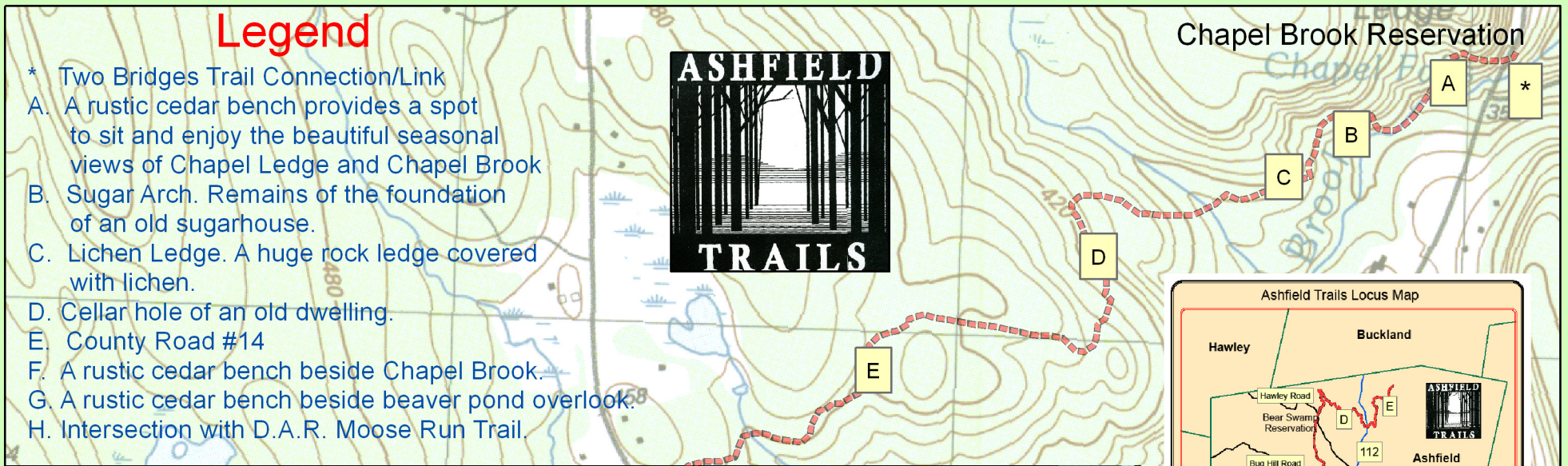
# Chapel Brook Reservation - D.A.R. State Forest Trail Map

## Legend

- \* Two Bridges Trail Connection/Link
- A. A rustic cedar bench provides a spot to sit and enjoy the beautiful seasonal views of Chapel Ledge and Chapel Brook
- B. Sugar Arch. Remains of the foundation of an old sugarcane house.
- C. Lichen Ledge. A huge rock ledge covered with lichen.
- D. Cellar hole of an old dwelling.
- E. County Road #14
- F. A rustic cedar bench beside Chapel Brook.
- G. A rustic cedar bench beside beaver pond overlook.
- H. Intersection with D.A.R. Moose Run Trail.



## Chapel Brook Reservation



Scale: 1" = 1000'

