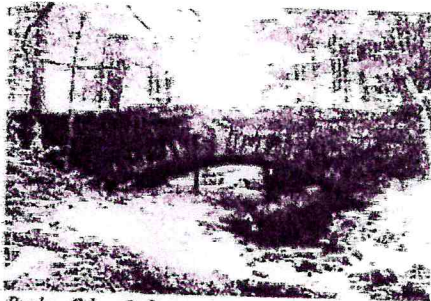
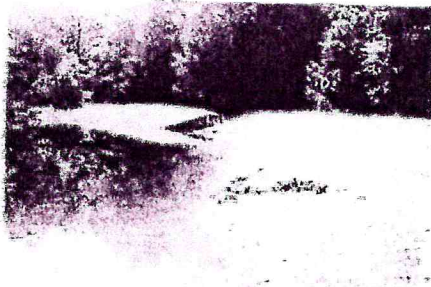


Chimney at CCC camp site



Bridge, Felton Lake area



Earthen dam at Felton Lake

the jurisdiction of the National Park Service, SP-11 (Company 120) in 1934, SP-25 (Company 2105) in 1935 and SP-28 (Company 2105) from 1936 to 1940, were also involved with forestry and road construction as well as establishment of a game refuge, but they concentrated on development of recreational facilities. These were located primarily along Schermerhorn Gorge and at Felton Lake with picnic facilities in other locations.

Resource Description

October Mountain, the largest tract of public land in the state, consists of over 16,000 acres of rugged upland. Little evidence of the former Whitney estate remains; the area is almost totally forested, much of it in plantations. CCC resources are concentrated near Felton Pond except for the CCC camps and forest headquarters (which was reportedly built by the CCC).

CCC Camp Sites (1933-40)

One CCC camp was located outside state boundaries on October Mountain Road north of Mill Brook in Lenox. The area is presently residential with no evidence of the CCC camp remaining. CCC Camp SP-11 (Company 120) was located west of Stanley Road just south of the Becker/Washington border. A sign marks the location but, no evidence of this camp was found, although foundations were reportedly extant in 1985/6. The third camp was located west of the Buckley Dunton Reservoir in Becker where there are two chimneys, one standing and one toppled. Faint topographic variations and planting patterns reveal the outline of several former buildings.

Schermerhorn Gorge/Felton Lake Area (1934-6)

Schermerhorn Gorge was the focal point of CCC recreational development at October Mountain. Facilities included trails, bridges and shelters. No evidence of any of these was found. At Felton Lake, at the upper end of the gorge, the earthen dam — 234' long, 15' high at the spillway with a clay and masonry core — still exists although the spillway is poor condition. Near the outfall from the pond is a stone-arch bridge, 35' long, 16' wide with an arch 25' long and rise of 14.5'. This bridge, featured in Albert Good's 1938 *Park and Recreation Structures*, is in good condition, although it is in an isolated and little used area. The foundations of several cabins above the pond were found. There is one standing fieldstone chimney. At the west end of Felton Lake was a platform at least 100 feet long with a standing fireplace. This may have been built by the CCC or may have been associated with a boy scout camp that used the area.