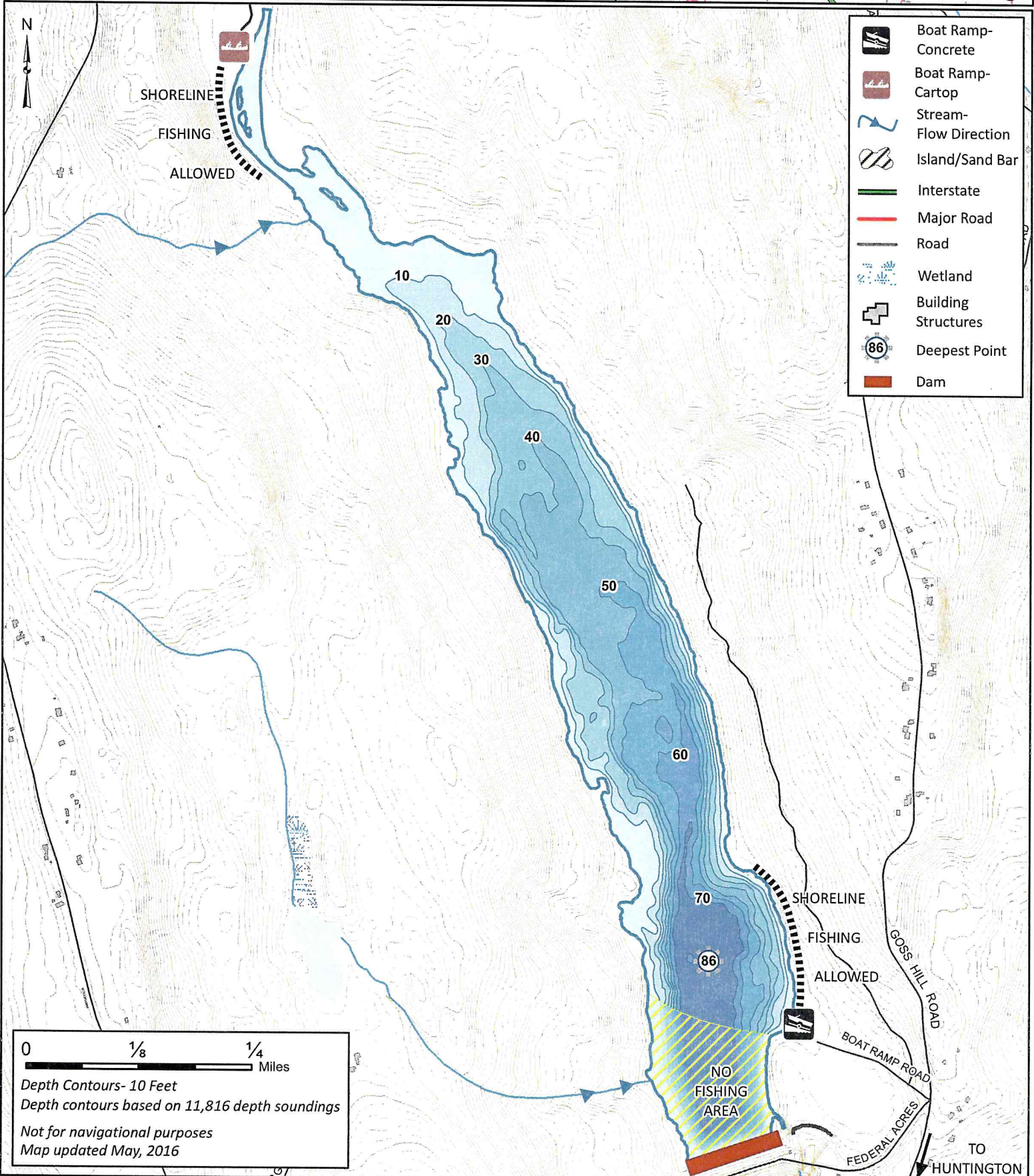
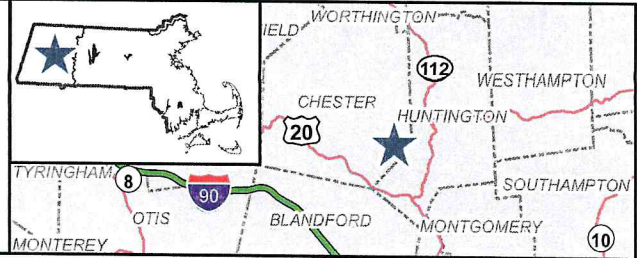




# Littleville Reservoir

254 Acres  
Huntington, Chester  
Westfield River Watershed  
Coordinates: 72°52'49"W 42°16'08"N  
USGS Quad: CHESTER



- Boat Ramp- Concrete
- Boat Ramp- Cartop
- Stream- Flow Direction
- Island/Sand Bar
- Interstate
- Major Road
- Road
- Wetland
- Building Structures
- Deepest Point
- Dam

0 1/8 1/4 Miles

Depth Contours- 10 Feet  
Depth contours based on 11,816 depth soundings  
Not for navigational purposes  
Map updated May, 2016



# Littleville Reservoir, Chester / Huntington

## General Information

Littleville Reservoir is a 254 acre impoundment on the Middle Branch of the Westfield River off of route 112 on the Chester and Huntington town line. Littleville Reservoir has an average depth of 32 feet, a maximum of 86 feet, and water that is typically transparent to 15 feet or more. The bottom is rocky with very little aquatic vegetation with the exception of a few coves at the southern and northern ends of the reservoir. Littleville Reservoir is owned and operated by the U.S. Army Corps of Engineers for the purposes of flood control and is also a backup water Supply for the City of Springfield. As a result, the shores of Littleville Reservoir are completely undeveloped.

## Recreational Access

The US Army Corps of Engineers manages a concrete boat ramp (72°52'47.815"W 42°16'7.945"N) and adjacent parking area suitable for 25 trailers off of Goss Hill Road on the southern shore of the reservoir. A second, smaller ramp, located on the northwestern end of the lake in the Dayville Area, can be used for launching canoes and kayaks. However, it may not be suitable for launching in low water conditions during summer and fall, and is closed during winter. Motors are limited to a maximum of 10 horsepower and shore fishing is restricted to small areas of the southeast and northwest shores (see map). The reservoir is open daily from sunrise to sunset and swimming is prohibited. Please contact the offices of the US Army Corps of Engineers at 413-667-3656 for additional information and/or restrictions pertaining to public access of Littleville Reservoir.

## Fish Populations

The following fish species were found during MassWildlife surveys: Largemouth Bass, Chain Pickerel, Yellow Perch, Bluegill, Pumpkinseed, Banded Sunfish, Brown Bullhead, White Sucker and Golden Shiner. The Reservoir is also known to contain a population of Rainbow Smelt and is stocked with trout every spring and fall.

## Fishing

Littleville Reservoir maintains a layer of cold, oxygenated water throughout the warm summer months which enables some trout to holdover for multiple seasons and attain considerable size. As a result, trout fishing is very popular here throughout the year. Yellow Perch are the dominant warmwater species found in the reservoir, though are of small to average size. While Largemouth Bass are present, they are typically smaller and less abundant relative to other lakes in the region. Ice fishing is allowed on the reservoir, creating year-round fishing opportunities. Littleville Reservoir has produced Largemouth Bass, Yellow Perch, Brown Bullhead, and Brown Trout that meet minimum sizes for recognition by the Sportfishing Awards Program.

## Useful Links:

[Get your Fishing License](#)

[Freshwater Fishing](#)

[Trout Stocking Information](#)

[Freshwater Sportfishing Awards Program](#)

## Learn more:

[Mass.gov/MassWildlife](http://Mass.gov/MassWildlife)

## Connect with us:

[Facebook.com/MassWildlife](https://Facebook.com/MassWildlife)

## Your local

**MassWildlife office:**  
88 Old Windsor Road  
Dalton, MA 01226  
(413) 684-1646

## STOP AQUATIC HITCHIKERS!

Prevent the transport of nuisance species.  
Clean all recreational equipment.  
[ProtectYourWaters.net](http://ProtectYourWaters.net)

Updated: 2016