

A stretch of the **Pileated Path** from the false summit to Land's End was been rerouted by the Trailwrights in 1998. Give the new section a try!

The **Klondike Connector** was rerouted in 1997 by a Trailwright crew and is greatly improved.

The section of the **Bartlett Trail** that extends down hill from the Observatory road to the parking area was been discontinued in late 1997.

The Official 1997

# Arunah Hill

## Trail Map and Guide

This map includes complete trail descriptions, elevations, boundaries, major geographical features, brooks, stone walls, wells, parking and structures

For information concerning Arunah Hill Natural Science Center please contact us at PO Box 16, Cummington, MA 01026

Beyond this and to your left you will see the south ridge and south summit of Arunah Hill, which is part of our 1994 Purchase.

Very soon the trail ends at the **Raven's Perch** lean-to. This area has a nice west facing view through the trees. The **Pileated Path** begins at this point.

### Tower's Trail

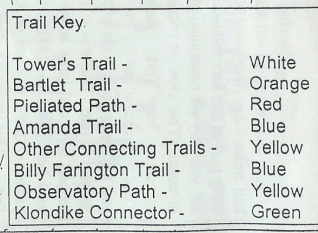
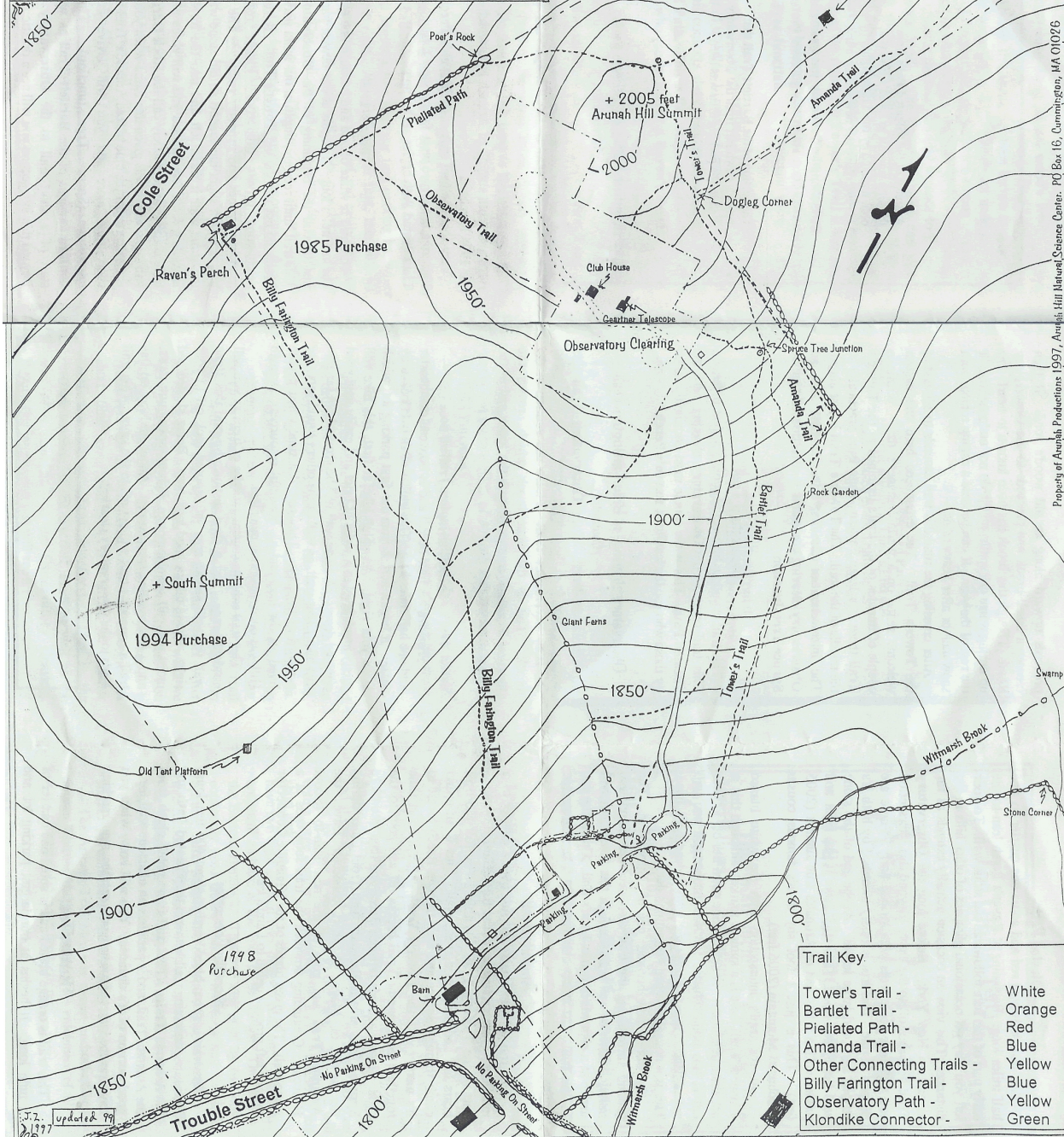
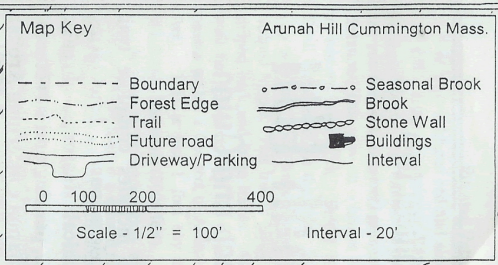
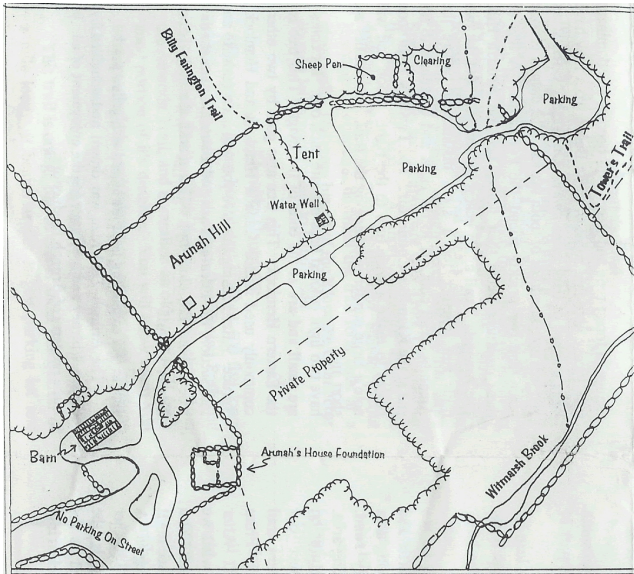
This trail is white blazed and between one quarter and one half miles long. It begins at our newest parking area just beyond the beginning of the **Observatory road**. This trail, until recently, began at our main parking area. Please do not use the old Tower's Trail. It ventures on neighboring private property. Please respect our neighbors wishes and property rights. The new trail begins with a slight dip toward an old stone wall. From the stone wall it turns left and into the forest. After ascending for a few minutes you will come to what we have come to affectionately call the **Rock Garden**. You will know why it was given this name when you see it. It is also here that the blue blazed **Amanda Trail** begins. A short time more and you will arrive at another intersection (**Spruce Tree Junction**). This is the northern terminus of the **Bartlett Trail** as well as the start of a short trail to the **Observatory clearing**. Beyond this intersection you will see a drastic

change in forest type and Beech will become the dominant tree. Please note that some of these Beech trees may have large patches of bark eaten away. On freshly eaten areas you will note hundreds of tooth marks. The culprit is none other than our prickly friend--the Porcupine. A few of these creatures make their homes here on Arunah Hill. The **Amanda Trail** again makes an entrance and the two trails run together for a short distance to where the **Amanda Trail** cuts off to the right and continues to it's end at the **Klondike Connector**. The **Tower's Trail** soon begins to make a wide turn to the right. Soon you will note a large conifer overhanging the trail. It's needles are short and have two light colored lines beneath each one. It's cones are small and are at the ends of the twigs. This tree is the Eastern Hemlock. This tree also goes by two other commonly used names--Canada Hemlock and Hemlock Spruce. After passing this tree you will soon come to an intersection, the **Pileated Path** and a summit marker (the true summit lies close by). This marks the end of the **Tower's Trail**.

**NOTE: All connecting trails are blazed with yellow paint.**

The Arunah Trail Map was drawn and compiled by Shawn Whitney and Joe Zuraw for the enjoyment of all. It is the property of Arunah Productions.





Property of Arunah Productions 1997, Arunah Hill Natural Science Center, PO Box 16, Cummington, MA 01026

J.J. updated 99  
1377



### **Pileated Path**

This trail is blazed red and some one quarter to one half miles long. Beginning at Raven's Perch lean-to the early part of this hike follows an old stone wall. To your left you may get occasional glimpses of other hills in the distance. This view on occasion actually extends as far as eastern New York. Before long the **Observatory Trail** branches off to the right. Beyond this intersection you will note some trees with striped bark. These are Striped Maple. This tree is easily identified by both it's striped bark and large leaves. At the end of the stone wall lies Poet's Rock. The trail bears to the right and passes within a few feet of Arunah's true summit (2005 feet). This is just 1 foot shy of it's famous cousin Wachusett Mountain (2006 feet).

At the trail's intersection with the white blazed **Tower's Trail** there is a summit marker, although this is not the true summit. A small stone cairn lies off to your left at this point. Just a few feet further and you will note a Beech tree to your right with a den at it's base. This is a now abandoned Porcupine's den.

The forest now becomes one of Spruce/Fir. The ground surrounding the trail also becomes damp and mossy. After a brief walk through this forest you will arrive at a sign which marks Land's End. This is the end of the trail. At this point the **Klondike Connector** begins.

### **Amanda Trail**

This trail is blue blazed and just over a quarter of a mile long. This trail begins at the Rock Garden which is part of the **Tower's Trail**. Within a few feet the trail bears left and parallels a stone wall. This is an uphill climb through Spruce and then through Beech forest to it's merger with the **Tower's Trail**. After a short time together the **Amanda Trail** breaks off and goes to the right. It now ascends through Beech and then into more Spruce. This area is abundant with Trout Lilies during the month of May. A short connector leaves the **Amanda Trail** and goes to the new lean-to (Scout Heaven). Continuing downhill the trail soon ends at a stone wall. The green blazes of the **Klondike Connector** to your left proceed uphill to Land's End.

### **Klondike Connector**

This trail is green blazed and is about 400 feet long. This is a connecting trail between the **Pileated Path** and the **Amanda Trails**. This trail is an uphill climb from the **Amanda Trail**, and it parallels an old stone wall for a good portion of it's distance. You will know when you have reached the end when you see the sign marking Land's End.

### **Bartlett Trail**

This trail is orange blazed and is about one quarter of a mile long. It begins at our largest parking lot and

proceeds upward along an old wood's road. It then crosses a small brook and proceeds to the **Observatory Road**. Though this brook has been known to nearly dry up during warm dry spells, please do not underestimate it the rest of the year. It can become a raging torrent with snow melt or after heavy rains.

After crossing the road this trail ascends to it's end at the **Tower's Trail**. The evergreens here can cast a welcome shade on a warm Summer's day. Within a couple of minutes of the trail's terminus at the **Tower's Trail** there is a large Eastern White Pine practically in the middle of the trail. The **Tower's Trail** is just ahead. The intersection of the **Tower's**, **Bartlett** and an **Observatory clearing connector** is affectionately called **Spruce Tree Junction**.

### **Observatory Trail**

This trail is yellow blazed and some 500 feet in length. This trail connects the **Observatory clearing** with the **Pileated Path**. This is the course most commonly taken by those who use the lean-to at **Raven's Perch**.

### **Observatory clearing to Billy Farrington Trail Connector**

Similar in length to the **Observatory Trail** this connector runs from the bottom corner of the clearing to the **Billy Farrington Trail**. Please use caution at the brook. This is the same brook which crosses the **Bartlett Trail** and courses beneath the lower end of the **Observatory Road**.

### **Billy Farrington Trail**

This trail is blue blazed and is between one quarter and one half miles long. This trail is often overlooked by many. It begins across from our first parking lot, which is on your right. An uphill hike at first, this hike will pretty much level to a series of brief and easily navigated ups and downs. A stone wall will be crossed not far into this hike. This wall, as well as the others found here, are a record of the past. They record a time when people lived off the land and it's bountiful resources. Arunah Hill was once a working mountain.

This trail exhibits several varieties of trees as you will no doubt note. Just a short distance beyond this stone wall you will see an area of exposed rock off to your right. Please take a good look here. Being shaded and moist you will see clubmosses, lichens, sphagnum moss, and a few seedling spruce trees. About midway up this trail a connector trail will cut off to the right. This trail leads to the **Observatory clearing**.

